

ZOOMLION

NEW ZT58J ZT68J

TELESCOPIC BOOM LIFTS

CE Certified

FEATURES

Standard Features

- ▶ Horn
- ▶ Proportional control
- ▶ All motion alarm
- ▶ Flashing beacon
- ▶ Self-closing entry gate
- ▶ Emergency descent system
- ▶ Emergency stop button
- ▶ Auto-leveling system
- ▶ On-board diagnostic system
- ▶ Tilt protection system
- ▶ Load sensing system
- ▶ 4.3' Led display
- ▶ Swing-out engine tray
- ▶ Anemograph

Accessories & Options

- ▶ Platform work light
- ▶ Anti-collision device

HIGHLIGHTS

- ▶ Work height up to 58.8m and horizontal outreach up to 25.5m (ZT58J Only)
- ▶ Highest self-propelled telescopic boom lift with a Work height of 67.5m and a horizontal outreach of 31m (ZT68J Only)
- ▶ Industry's first polygonal innovative boom, boom weight reduced by more than 10%, vertical stiffness increased by 25%, torsion resistance increased by 20%, and offers small deformation and stable control
- ▶ X outrigger offers larger working envelope, stronger off-road ability, and better stability
- ▶ Intelligent control of four-wheel steering ensure coordination and consistency of outriggers during steering and expansion
- ▶ All-wheel steering angles are automatically matched ensure straight travel
- ▶ Five-section boom synchronously extends, efficient and stable

ACCESS WITH ZOOMLION GREEN

Phone: 0086(731)-88353680 0086(731)-88250971
E-mail: awm@zoomlion.com

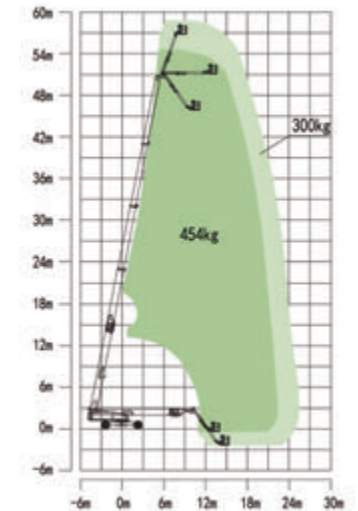
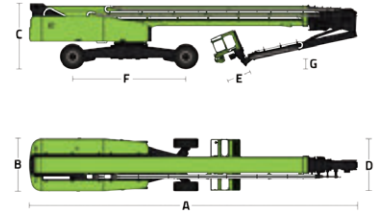
Add: ZOOMLION Wangcheng Industrial Park, Tengfei Road 997, Changsha, Hunan, China
Web: www.en.zoomlion.com

MAIN SPECS OF TELESCOPIC BOOM LIFTS

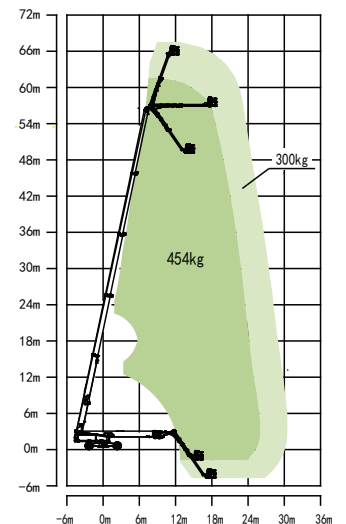
ZT58J/ZT68J

Comply with CE Standard

Model	ZT58J		ZT68J	
	Metric	Imperial	Metric	Imperial
Size				
Work Height	58.8m	192ft 11in	67.5m	221ft 5in
Platform Height	56.8m	186ft 4in	65.5m	214ft 11in
Horizontal Outreach	25.5m	83ft 8in	31m	101ft 8in
A - Stowed Length	14.4m	47ft 3in	15.5m	50ft 10in
B - Stowed Width	2.5m	8ft 2in	2.5m	8ft 2in
C - Stowed Height	3.06m	10ft	3.06m	10ft
D - Platform Length	2.44m	8ft	2.44m	8ft
E - Platform Width	0.91m	3ft	0.91m	3ft
F - Wheelbase	5.357/4.69m	17ft 7in/15ft 5in	5.357/4.69m	17ft 7in/15ft 5in
Tread	2.5/5.15m	8ft 2in/16ft 11in	2.5/5.15m	8ft 2in/16ft 11in
G - Ground Clearance	0.40m	1ft 4in	0.40m	1ft 4in
Performance				
Platform Capacity (Unrestricted/Restricted)	300/454kg	660/1000lb	300/454kg	660/1000lb
Drive Speed (Stowed)	4.5km/h	2.8mph	4.5km/h	2.8mph
Gradeability	45%(24°)		40%(22°)	
Turning Radius (Inside)	6.79/2.57m	22ft 3in/8ft 5in	6.79/2.57m	22ft 3in/8ft 5in
Turning Radius (Outside)	8.43/6.39m	27ft 8in/20ft 12in	8.43/6.39m	27ft 8in/20ft 12in
Turntable Swing	360° continuous		360° continuous	
Platform Rotation	±90°		±90°	
Tail Swing	2.25m	7ft 5in	2.15m	7ft 1in
Jib (Range of Articulation)	125°(-55°~70°)		125°(-55°~70°)	
Max. Wind Speed	12.5m/s	28mph	12.5m/s	28mph
Power				
Engine	Cummins F3.8(EU V) 75kW/2200rpm Cummins QSF3.8(EU III)		Cummins F3.8(EU V) 75kW/2200rpm Cummins QSF3.8(EU III)	
Fuel Tank Capacity	200L	52.8gal	200L	52.8gal
Control Voltage	12V DC		12V DC	
Hydraulic Tank Capacity	400L	105gal	400L	105gal
Drive Mode	4WD		4WD	
Steering Mode	Four wheels/Front wheel/Crab		Four wheels/Front wheel/Crab	
Tire				
Type	445/50 D710 Foam-filled Tires		445/50 D710 Foam-filled Tires	
Weight				
Gross	29600kg	65256lb	35900kg	79145lb



Range of Motion ZT58J



Range of Motion ZT68J